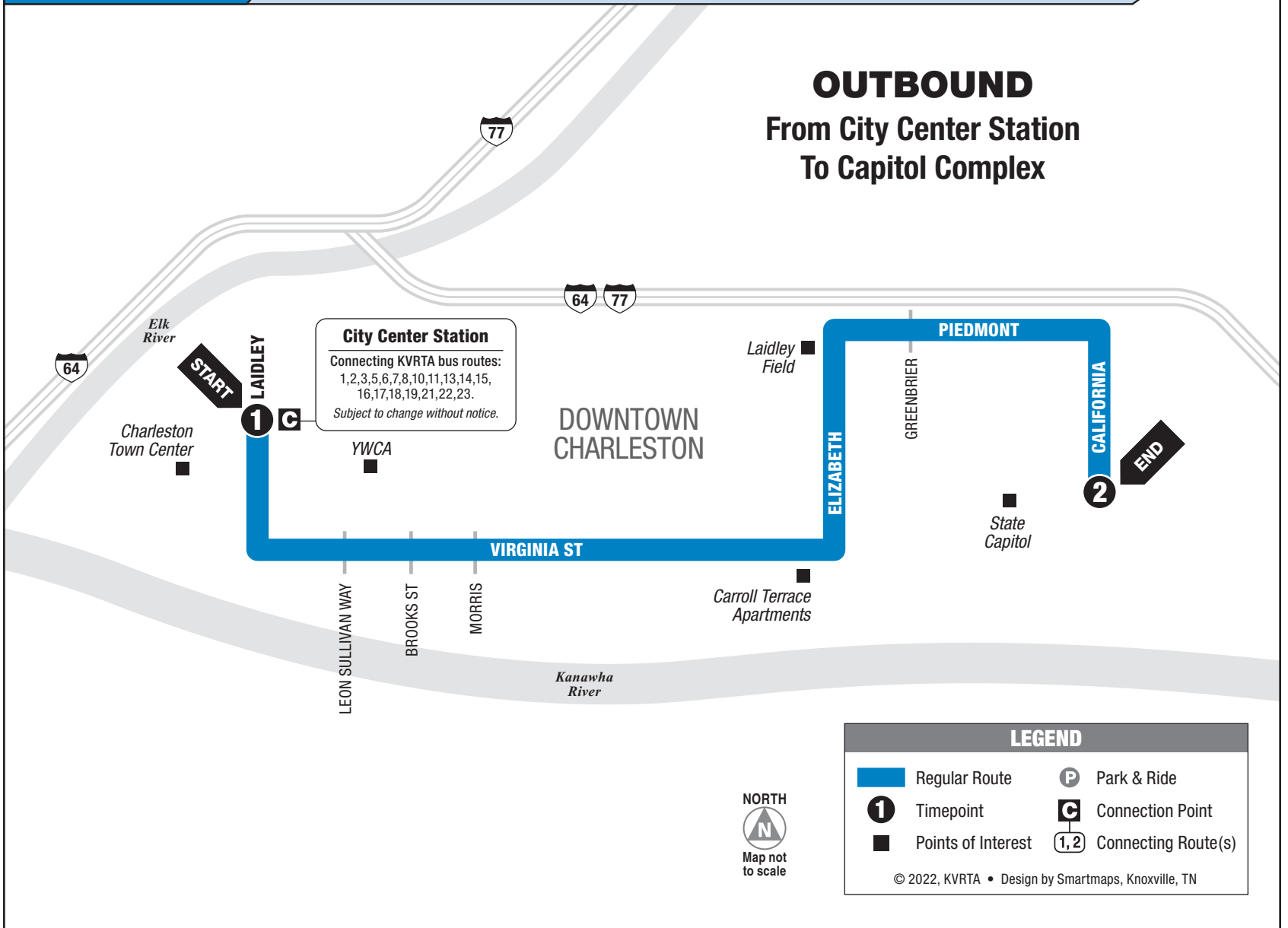


# ROUTE 20

# VIRGINIA STREET / CAPITOL COMPLEX

## OUTBOUND From City Center Station To Capitol Complex



### MONDAY – SATURDAY • OUTBOUND FROM CITY CENTER STATION TO CAPITOL COMPLEX

	1 City Center Station	2 Capitol Complex
AM	7:00	7:15
	8:00	8:15
	9:00	9:15
	10:00	10:15
	10:36	11:00
PM	11:36	<b>12:00</b>
	<b>12:15</b>	<b>12:30</b>
	<b>12:36</b>	<b>1:00</b>
	<b>1:36</b>	<b>2:00</b>
	<b>2:30</b>	<b>2:45</b>
	<b>3:06</b>	<b>3:30</b>
	<b>3:30</b>	<b>3:45</b>
	<b>4:06</b>	<b>4:30</b>
	<b>4:30</b>	<b>4:45</b>
	<b>5:06</b>	<b>5:30</b>
<b>5:30</b>	<b>5:45</b>	

Service on Virginia Street is provided by Routes 16 and 19.

### SUNDAY • OUTBOUND FROM CITY CENTER STATION TO CAPITOL COMPLEX

	1 City Center Station	2 Capitol Complex
AM	4:25	4:35
	6:30	6:41
	8:40	8:52
	10:30	10:42
PM	<b>12:00</b>	<b>12:12</b>
	<b>2:15</b>	<b>2:27</b>
	<b>5:25</b>	<b>5:33</b>
	<b>7:15</b>	<b>7:24</b>
	<b>9:15</b>	<b>9:24</b>
	<b>11:15</b>	<b>11:24</b>

Service on Virginia Street is provided by Route 22.

See other side for trips FROM Capitol Complex

**Please have your fare ready before boarding the bus.**

### INFORMATION

No smoking, no pets, no food or open beverages, no playing audio devices.

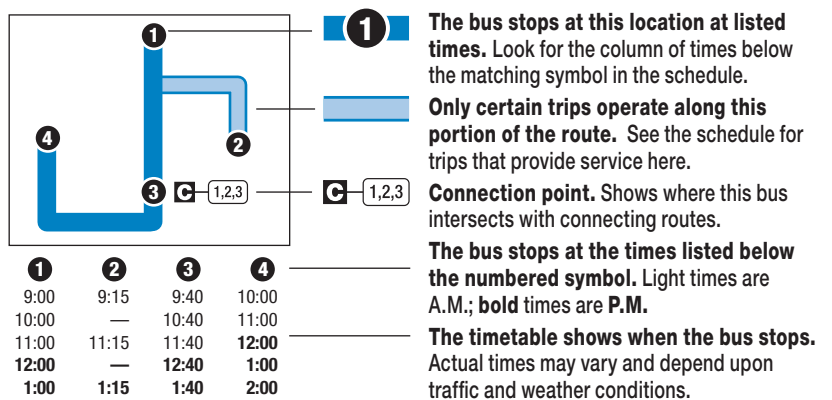
**For safety's sake**, please be seated after boarding the bus and remain seated at all times. After ringing the bell for your destination, stay seated until the bus comes to a complete stop. When boarding or exiting the bus, use extreme caution on steps and around the doors. Do not attempt to cross the street in front of the bus after exiting and wait for traffic to clear before crossing. Shirts and shoes must be worn while riding the bus. Litter receptacles are located at the front of the bus. Please help us keep our buses clean!

**Senior Citizens and handicapped individuals** with proper I.D. or those who present a valid Medicare Card may ride any KVRTA bus (except commuter buses) for 1/2 fare. Contact KVRTA for details at 343-7586.

#### Notice of Title VI Rights

It is a KVRTA policy that we do not discriminate based on race, gender, color or national origin. Any inquiries or complaints related to Title VI may be sent in writing to the General Manager, P.O. Box 1188, Charleston, WV 25324 or calling 304-343-3840. A downloadable form is available on KVRTA website [www.rideonkrt.com](http://www.rideonkrt.com)

### INSTRUCTIONS



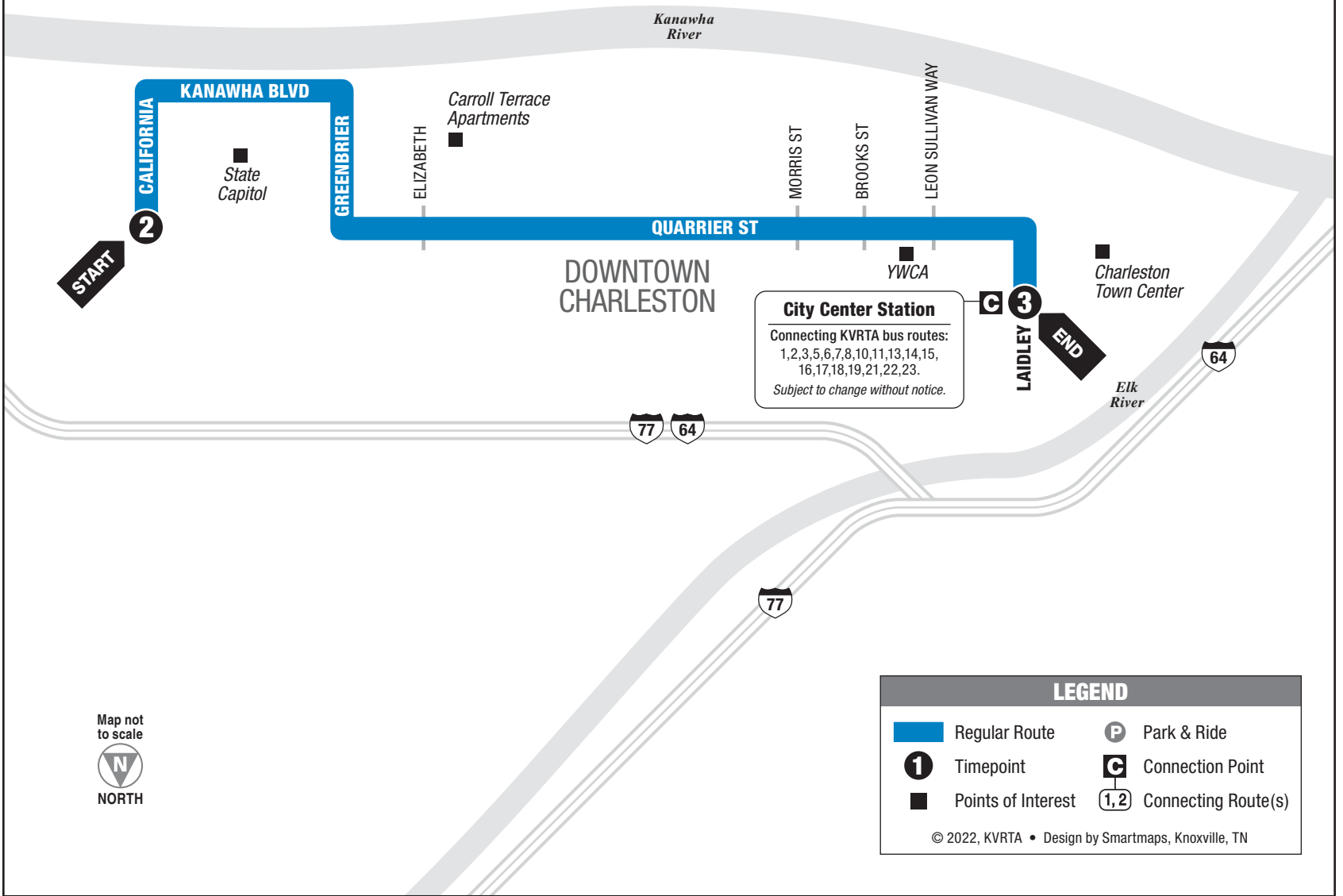
For more information call: 343-7586 • [www.rideonkrt.com](http://www.rideonkrt.com)

# ROUTE 20

# VIRGINIA STREET / CAPITOL COMPLEX

## INBOUND

From Capitol Complex  
To City Center Station



### MONDAY – SATURDAY • INBOUND FROM CAPITOL COMPLEX TO CITY CENTER STATION

	<b>2</b> Capitol Complex	<b>3</b> City Center Station
	6:45	7:00
	7:45	8:00
AM	8:45	9:00
	9:45	10:00
	11:00	11:15
	11:00	11:36
PM	<b>12:00</b>	<b>12:36</b>
	<b>1:00</b>	<b>1:15</b>
	<b>1:00</b>	<b>1:36</b>
	<b>2:00</b>	<b>2:36</b>
	<b>3:15</b>	<b>3:30</b>
	<b>3:30</b>	<b>4:06</b>
	<b>4:15</b>	<b>4:30</b>
	<b>4:30</b>	<b>5:06</b>
	<b>5:15</b>	<b>5:30</b>
	<b>5:30</b>	—

Service on Virginia Street is provided by Routes 16 and 19.

### SUNDAY • INBOUND FROM CAPITOL COMPLEX TO CITY CENTER STATION

	<b>2</b> Capitol Complex	<b>3</b> City Center Station
	6:12	6:30
	7:52	8:10
AM	10:55	11:10
	11:47	<b>12:00</b>
PM	<b>2:16</b>	<b>2:30</b>
	<b>3:16</b>	<b>3:30</b>
	<b>7:02</b>	<b>7:15</b>
	<b>8:59</b>	<b>9:15</b>
	<b>11:00</b>	<b>11:15</b>
<b>12:23</b>	<b>12:35</b>	

Service on Virginia Street is provided by Route 22.

See other side for trips TO Capitol Complex

- Carroll Terrace Apartments
- Laidley Field
- Capitol Complex
- YWCA

