

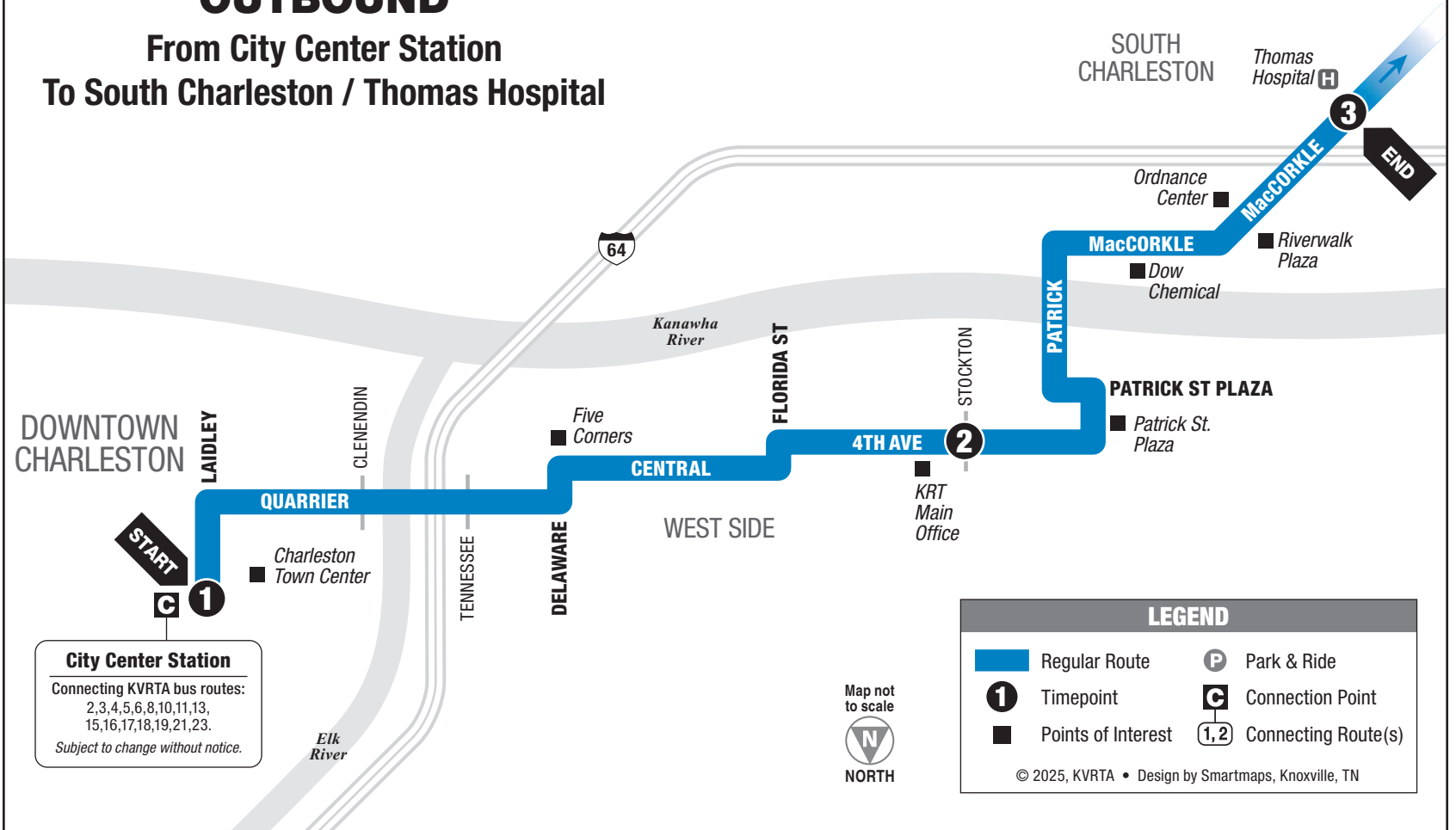
ROUTE 1sc

SOUTH CHARLESTON

Some trips continue to St. Albans. See Route 1SA brochure for more information.

OUTBOUND

From City Center Station
To South Charleston / Thomas Hospital



MONDAY – FRIDAY • OUTBOUND FROM CITY CENTER STATION TO THOMAS HOSPITAL

	1 City Center Station	2 4th at Stockton	3 Thomas Hospital	See other side for trips TO Downtown Charleston
AM	5:30	5:40	5:50	
	6:30	6:40	6:50	
	7:30	7:40	7:50	
	8:30	8:40	8:50	
	9:30	9:40	9:50	
PM	10:30	10:40	10:50	
	11:30	11:40	11:50	
	12:30	12:40	12:50	
	1:30	1:40	1:50	
	2:30	2:40	2:50	
	3:30	3:40	3:50	
	4:30	4:40	4:50	
	5:30	5:40	5:50	
	6:30	6:40	6:50	

No Saturday or Holiday Service.

Please have your fare ready before boarding the bus.

INFORMATION

No smoking, no pets, no food or open beverages, no playing audio devices.

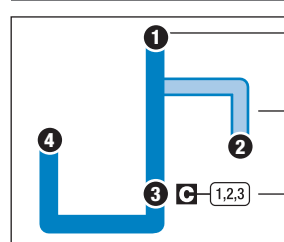
For safety's sake, please be seated after boarding the bus and remain seated at all times. After ringing the bell for your destination, stay seated until the bus comes to a complete stop. When boarding or exiting the bus, use extreme caution on steps and around the doors. Do not attempt to cross the street in front of the bus after exiting and wait for traffic to clear before crossing. Shirts and shoes must be worn while riding the bus. Litter receptacles are located at the front of the bus. Please help us keep our buses clean!

Senior Citizens and handicapped individuals with proper I.D. or those who present a valid Medicare Card may ride any KVRTA bus (except commuter buses) for 1/2 fare. Contact KVRTA for details at 343-7586.

Notice of Title VI Rights

It is a KVRTA policy that we do not discriminate based on race, gender, color or national origin. Any inquires or complaints related to Title VI may be sent in writing to the General Manager, P.O. Box 1188, Charleston, WV 25324 or calling 304-343-3840. A downloadable form is available on KVRTA website www.rideonkrt.com

INSTRUCTIONS



1	2	3	4
9:00	9:15	9:40	10:00
10:00	—	10:40	11:00
11:00	11:15	11:40	12:00
12:00	—	12:40	1:00
1:00	1:15	1:40	2:00

- 1** The bus stops at this location at listed times. Look for the column of times below the matching symbol in the schedule.
- Only certain trips operate along this portion of the route. See the schedule for trips that provide service here.
- C** **1,2,3** Connection point. Shows where this bus intersects with connecting routes.
- The bus stops at the times listed below the numbered symbol.** Light times are A.M.; bold times are P.M.
- The timetable shows when the bus stops.** Actual times may vary and depend upon traffic and weather conditions.

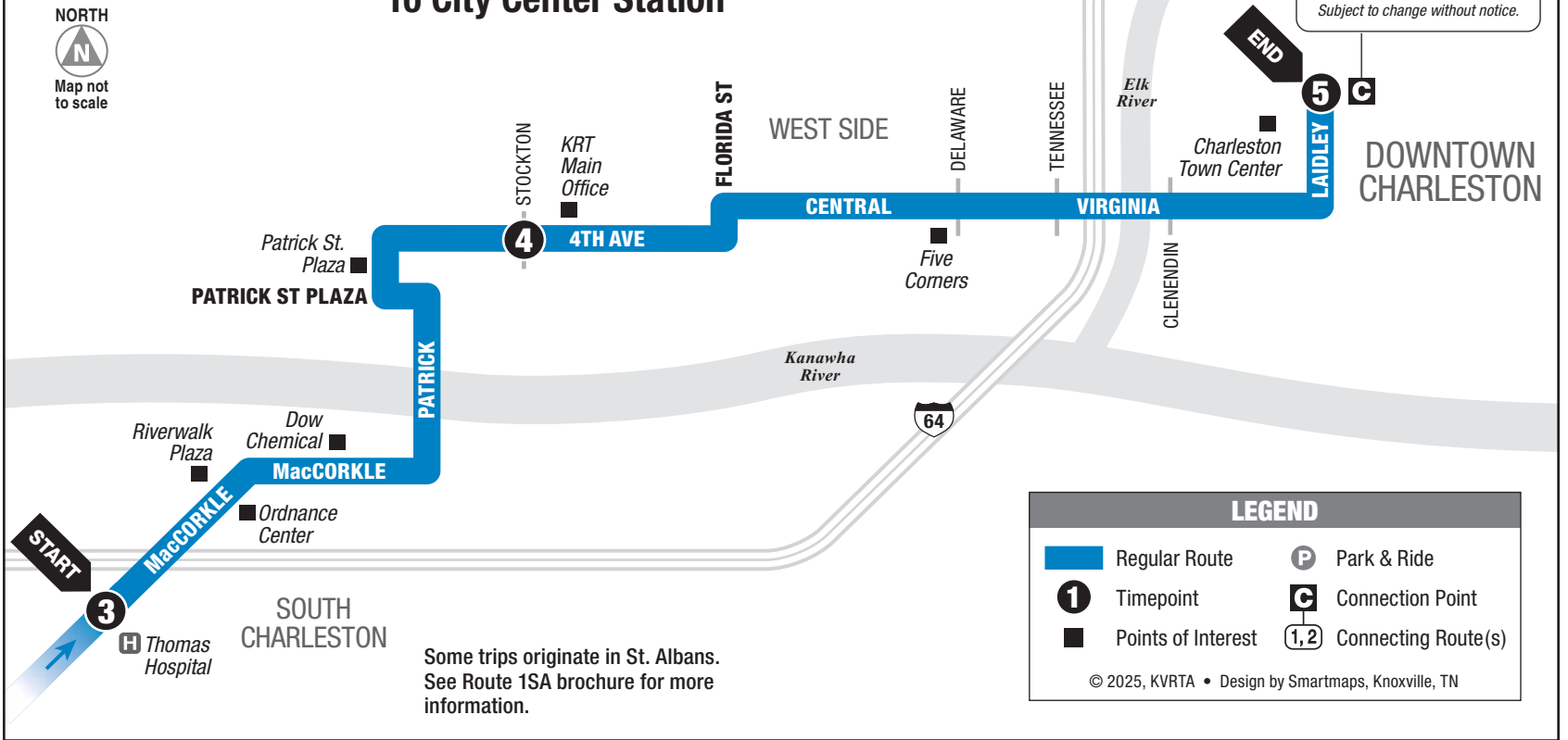
For more information call: 343-7586 • www.rideonkrt.com

ROUTE 1sc

SOUTH CHARLESTON

INBOUND

From South Charleston / Thomas Hospital
To City Center Station



MONDAY – FRIDAY • INBOUND FROM THOMAS HOSPITAL TO CITY CENTER STATION

	3 Thomas Hospital	4 4th at Stockton	5 City Center Station	See other side for trips FROM Downtown Charleston
AM	5:55	6:05	6:15	
	6:20	6:30	6:40	
	7:15	7:30	7:40	
	8:15	8:30	8:40	
	9:15	9:30	9:40	
	10:15	10:30	10:40	
PM	11:15	11:30	11:40	
	12:15	12:30	12:40	
	1:15	1:30	1:40	
	2:15	2:30	2:40	
	3:15	3:30	3:40	
	4:15	4:30	4:40	
	5:15	5:30	5:40	
	6:15	6:30	6:40	
	7:15	7:30	7:40	
	8:15	8:30	8:40	
AM	10:15	10:30	10:40	
	12:15	12:30	12:40	

No Saturday or Holiday Service.

KANAWHA VALLEY REGIONAL
TRANSPORTATION AUTHORITY

ROUTE

1sc

MONDAY-FRIDAY

South Charleston

SERVING:

- South Charleston
- Thomas Hospital
- KRT Main Office / 4th & Stockton
- Patrick Street Plaza

Effective
2.2025



304-343-7586

RIDEONKRT.COM